



# SJ63 AJ

## ARTICULATING BOOM

### STANDARD FEATURES

- Axle based 4WD system
- Operator controlled locking rear differential and limited slip front differential
- Oscillating axle
- Drivable at full height
- Straight boom functionality
- 360° Continuous turret rotation
- 45% Gradeability
- 65 HP Deutz diesel engine
- Swing out engine tray
- Swing up cowlings
- Modular platform railing system
- Tri-entry sliding mid-rail
- Wiring for AC outlet to platform
- EasyDrive™ direction sensing drive and steer controls
- SpeedyReach™ functionality
- Proportional controls
- Relay based control system
- Colour coded and numbered wiring
- Hourmeter
- Overload sensing system
- 7.5 kW Generator (includes hydraulic oil cooler)
- Operator horn
- Flashing light
- All motion alarm
- Load sensing system
- Tie down/lifting lugs
- Wet disc SAHR brakes (front and rear axle)
- 10.5 x 17.5 Grip lug foam-filled non-marking tyres
- Secondary guarding electrical (SGE)

### ACCESSORIES AND OPTIONS

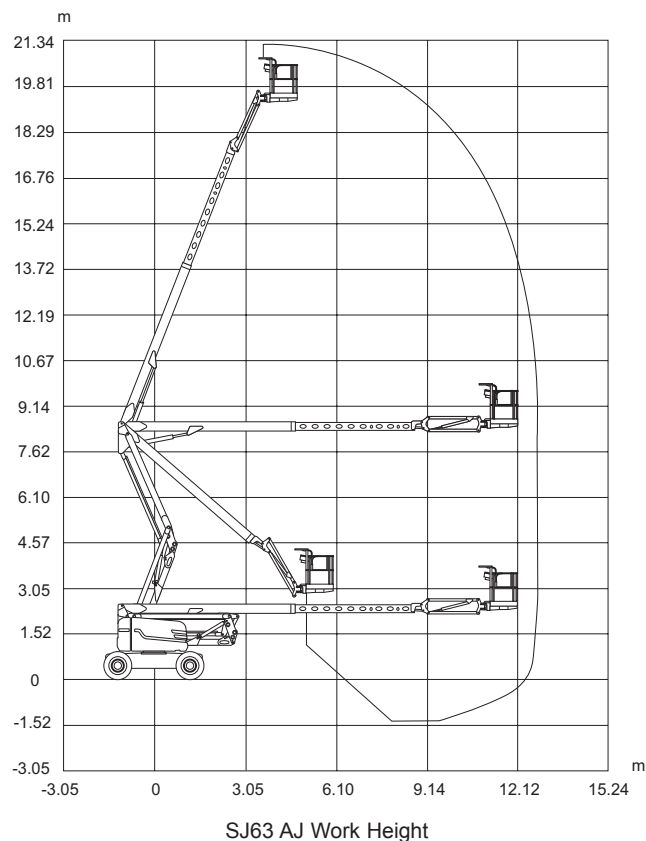
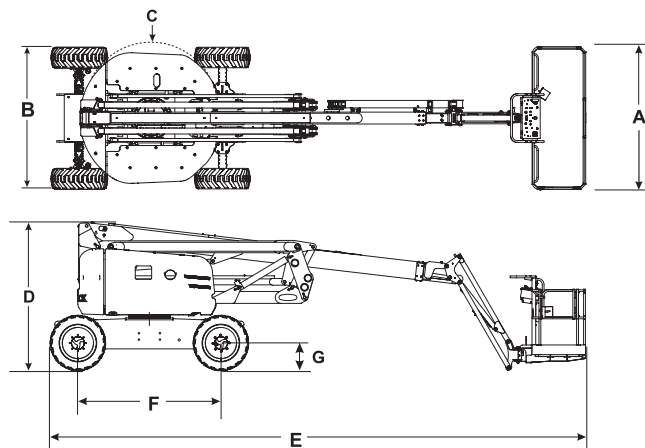
- 0.91 x 1.83 m Platform
- Half-height mesh platform (either size)
- 1/2" Airline to platform
- Glazier kit
- Pipe rack
- Tool caddy
- Diesel scrubber
- Hostile environment package  
(includes cylinder bellows, boom wipers, covers for the fly boom cutouts, and control box cover.)
- Auxiliary top rail (0.91 x 2.44 m platform only)
- Control box cover
- Rear Gate
- Bio oil

† Standard lead times may be increased when optional equipment is added, consult factory.

‡ Capacities, and machine weights may differ when options are added.

# SJ63 AJ ARTICULATING BOOM LIFT

Dimensions	SJ63 AJ
Work Height	21.38 m
Platform Height	19.38 m
Horizontal Reach	12.19 m
Up and Over Height	8.38 m
<b>A</b> Platform Size	0.91 x 2.44 m
<b>B</b> Stowed Width	2.44 m
<b>C</b> Tailswing	Zero
<b>D</b> Stowed Height	2.54 m
<b>E</b> Stowed Length	9.14 m
<b>F</b> Wheelbase	2.44 m
<b>G</b> Ground Clearance	0.33 m
Specifications	SJ63 AJ
Rotation	360° Continuous
Platform Rotation	170°
Jib Length	1.68 m
Jib Range +/-	+65° / -60°
Weight*	9,934 kg
Gradeability	45%
Turning Radius (Inside)	2.21 m
Turning Radius (Outside)	5.31 m
Axle Oscillation	10.16 cm
Drive Speed (High speed)	7.3 km/h
Capacity	227 kg
Local Floor Load (With Rated Load)	8.09 kg/sq cm
Overall Floor Load (With Rated Load)	1224 kg/sq m
Maximum # of Persons	2
Tyre Type	Foam-filled NM
Tyre Size	10.5 x 17.5
Diesel Engine	Deutz D2011L04i - 65 HP (48 KW)
Fuel Tank Capacity	115 L
Hydraulic Reservoir	115 L



**Skyjack Australia Pty Ltd**  
Unit 1, 35 Honeycomb Drive  
Eastern Creek  
NSW 2766  
Australia  
Phone +61 (0) 2 9854 0700  
Fax +61 (0) 2 9854 0777  
Email: jcranmer@skyjack.com

[www.skyjack.com](http://www.skyjack.com)

This brochure is for illustrative purpose only and based on the latest information at the time of printing. Skyjack Inc. reserves the right to make changes at any time, without notice, to specifications, standard and optional equipment. Consult the Operating Maintenance and Parts Manuals for proper procedures. AS marked platforms are in conformance to Standard AS/NZS 1418.10:2011.

AU/NZ/10/2017